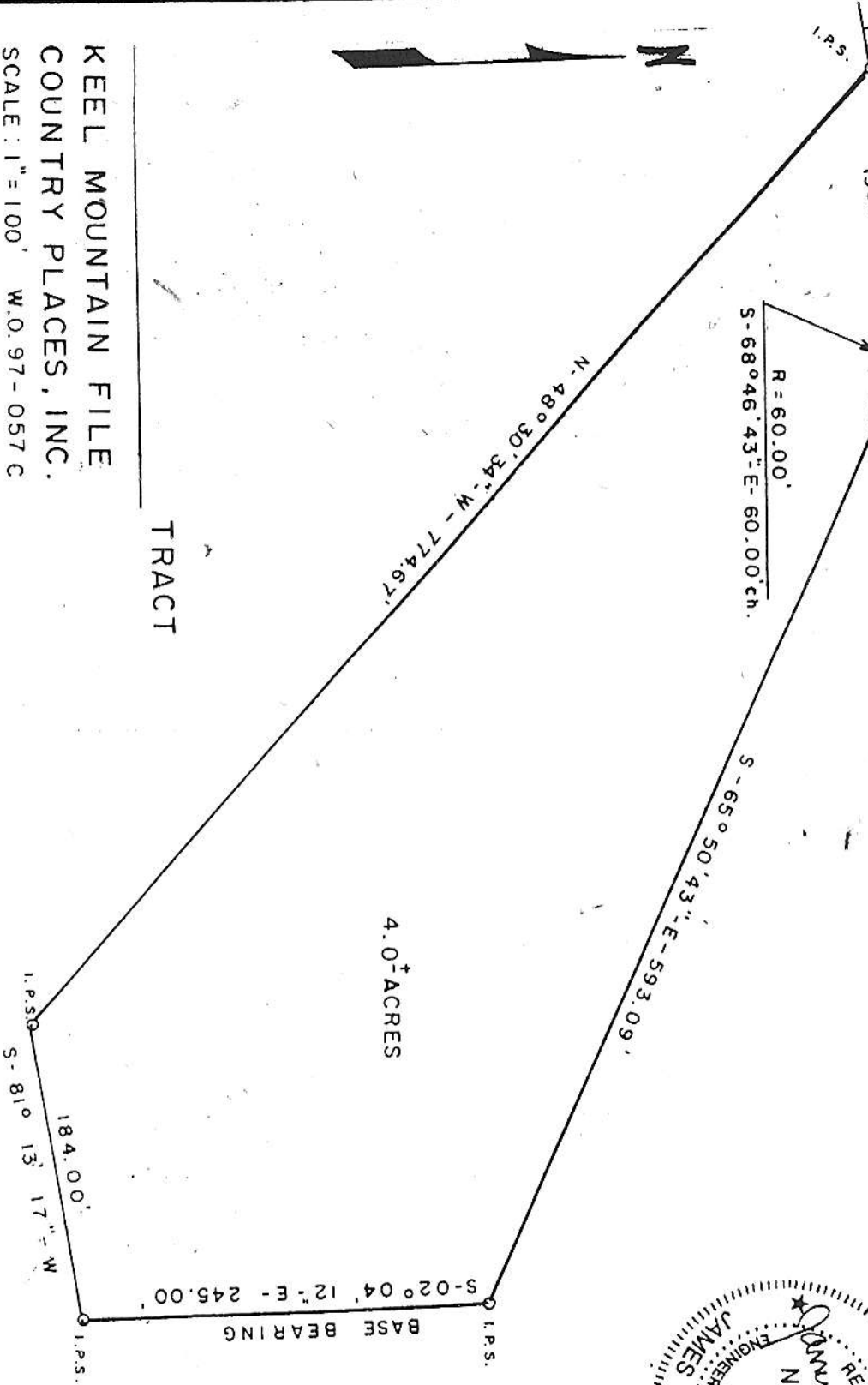
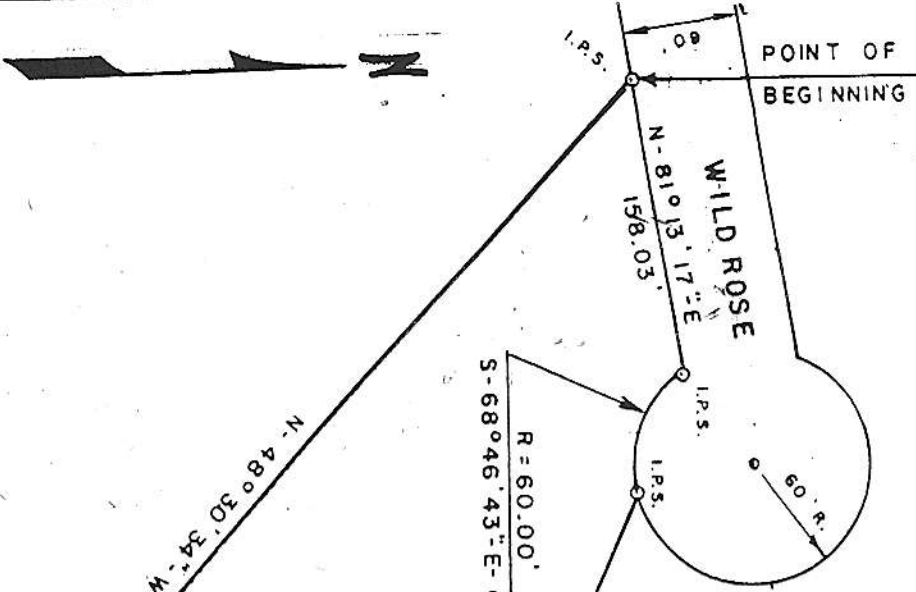
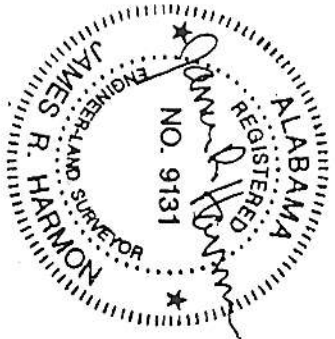


THIS POINT IS DUE SOUTH, 617.75' AND DUE EAST, 723.86' FROM THE NORTH WEST CORNER OF SEC. 25 - T4S - R2E

THIS SURVEY AND MAP WERE MADE IN ACCORDANCE WITH THE MINIMUM TECHNICAL STANDARDS FOR LAND SURVEYS IN THE STATE OF ALABAMA. I.P.S. INDICATES A 5/8" DIA. STEEL ROD WITH A P.V.C. IDENTIFICATION CAP SET BY GILBERT ENGINEERING COMPANY.

GILBERT ENGINEERING CO.  
HUNTSVILLE, ALABAMA



4.0<sup>±</sup> ACRES

TRACT

KEEL MOUNTAIN FILE  
COUNTRY PLACES, INC.  
SCALE: 1" = 100' W.O. 97-057 C