

L1	N44°39'01"E	71.76
L2	N47°44'03"E	28.24
L3	N48°54'28"E	44.08
L4	N49°52'46"E	60.55
L5	N50°52'58"E	77.02
L6	N51°52'58"E	93.49
L7	N52°52'58"E	109.96
L8	N53°52'58"E	126.43
L9	N54°52'58"E	142.90
L10	N55°52'58"E	159.37
L11	N56°52'58"E	175.84
L12	N57°52'58"E	192.31
L13	N58°52'58"E	208.78
L14	N59°52'58"E	225.25
L15	N60°52'58"E	241.72
L16	N61°52'58"E	258.19
L17	N62°52'58"E	274.66
L18	N63°52'58"E	291.13
L19	N64°52'58"E	307.60
L20	N65°52'58"E	324.07
L21	N66°52'58"E	340.54
L22	N67°52'58"E	357.01
L23	N68°52'58"E	373.48
L24	N69°52'58"E	389.95
L25	N70°52'58"E	406.42
L26	N71°52'58"E	422.89
L27	N72°52'58"E	439.36
L28	N73°52'58"E	455.83
L29	N74°52'58"E	472.30
L30	N75°52'58"E	488.77
L31	N76°52'58"E	505.24
L32	N77°52'58"E	521.71
L33	N78°52'58"E	538.18
L34	N79°52'58"E	554.65
L35	N80°52'58"E	571.12
L36	N81°52'58"E	587.59
L37	N82°52'58"E	604.06
L38	N83°52'58"E	620.53
L39	N84°52'58"E	637.00
L40	N85°52'58"E	653.47
L41	N86°52'58"E	669.94
L42	N87°52'58"E	686.41
L43	N88°52'58"E	702.88
L44	N89°52'58"E	719.35
L45	N90°52'58"E	735.82
L46	N91°52'58"E	752.29
L47	N92°52'58"E	768.76
L48	N93°52'58"E	785.23
L49	N94°52'58"E	801.70
L50	N95°52'58"E	818.17
L51	N96°52'58"E	834.64
L52	N97°52'58"E	851.11
L53	N98°52'58"E	867.58
L54	N99°52'58"E	884.05
L55	N00°52'58"E	900.52
L56	N01°52'58"E	916.99
L57	N02°52'58"E	933.46
L58	N03°52'58"E	949.93
L59	N04°52'58"E	966.40
L60	N05°52'58"E	982.87
L61	N06°52'58"E	999.34
L62	N07°52'58"E	1015.81
L63	N08°52'58"E	1032.28
L64	N09°52'58"E	1048.75
L65	N10°52'58"E	1065.22
L66	N11°52'58"E	1081.69
L67	N12°52'58"E	1098.16
L68	N13°52'58"E	1114.63
L69	N14°52'58"E	1131.10
L70	N15°52'58"E	1147.57
L71	N16°52'58"E	1164.04
L72	N17°52'58"E	1180.51
L73	N18°52'58"E	1196.98
L74	N19°52'58"E	1213.45
L75	N20°52'58"E	1229.92
L76	N21°52'58"E	1246.39
L77	N22°52'58"E	1262.86
L78	N23°52'58"E	1279.33
L79	N24°52'58"E	1295.80
L80	N25°52'58"E	1312.27
L81	N26°52'58"E	1328.74
L82	N27°52'58"E	1345.21
L83	N28°52'58"E	1361.68
L84	N29°52'58"E	1378.15
L85	N30°52'58"E	1394.62
L86	N31°52'58"E	1411.09
L87	N32°52'58"E	1427.56
L88	N33°52'58"E	1444.03
L89	N34°52'58"E	1460.50
L90	N35°52'58"E	1476.97
L91	N36°52'58"E	1493.44
L92	N37°52'58"E	1509.91
L93	N38°52'58"E	1526.38
L94	N39°52'58"E	1542.85
L95	N40°52'58"E	1559.32
L96	N41°52'58"E	1575.79
L97	N42°52'58"E	1592.26
L98	N43°52'58"E	1608.73
L99	N44°52'58"E	1625.20
L100	N45°52'58"E	1641.67

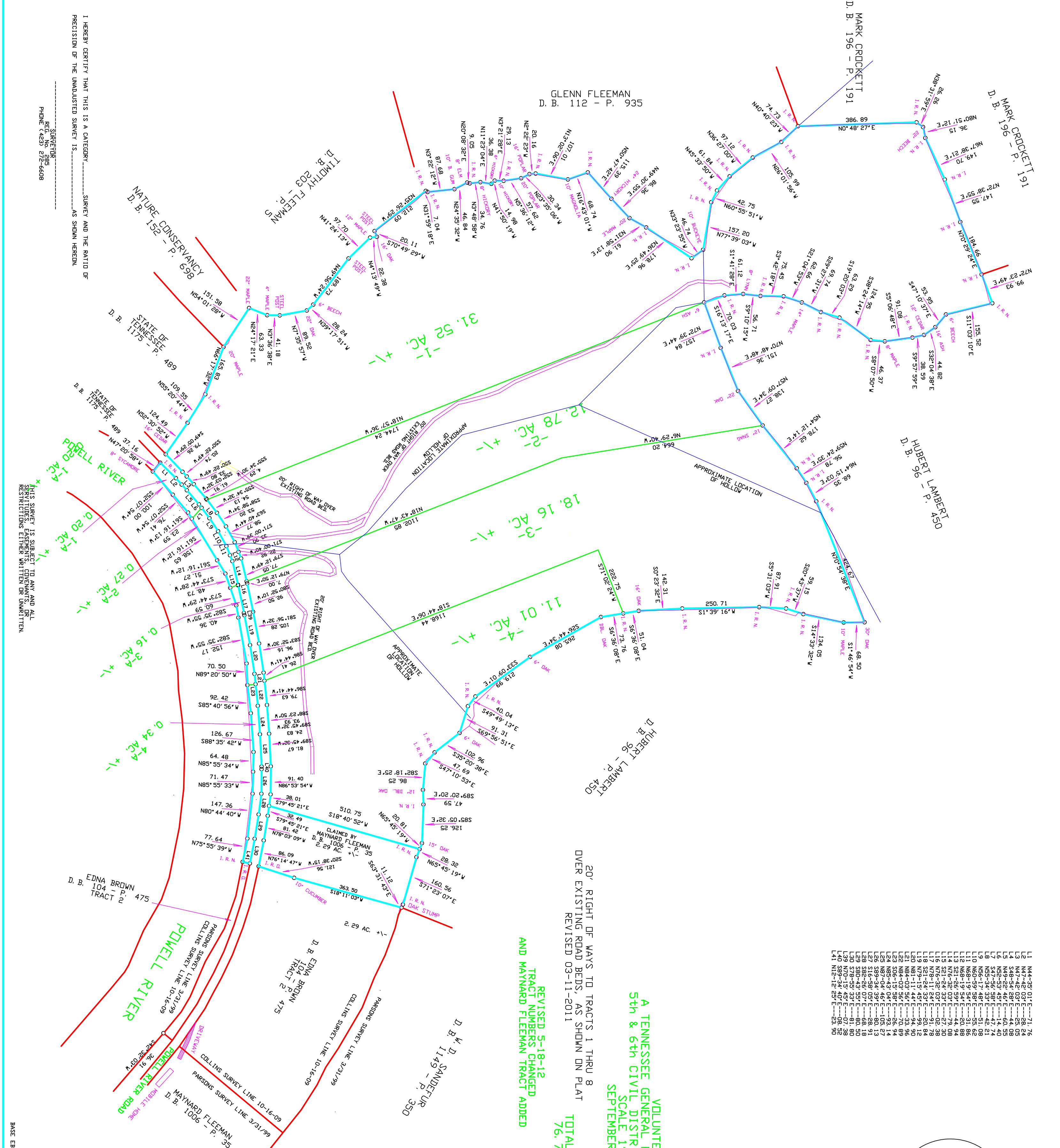
VOLUNTEER LAND
A TENNESSEE GENERAL PARTNERSHIP, PROPERTY
5th & 6th CIVIL DISTRICT CLAIRBORNE CD., TN.
SCALE 1" = 200'
SEPTEMBER 16, 2010

D. B. 1290 - P. 79
 TOTAL ACRES
 76.73 +/-

REVISED 5-18-12
 TRACT NUMBERS CHANGED
 AND MAYNARD FLEEMAN TRACT ADDED

ALL LINES AND CORNERS
 WITNESSED BY: MAYNARD FLEEMAN
 ACCORDING TO PARSONS SURVEY, 3/31/99

20' RIGHT OF WAYS TO TRACTS 1 THRU 8
 OVER EXISTING ROAD BEDS, AS SHOWN ON PLAT
 REVISED 03-11-2011



I HEREBY CERTIFY THAT THIS IS A CATEGORY 1 SURVEY AND THE RATIO OF PRECISION OF THE UNADJUSTED SURVEY IS AS SHOWN HEREIN.

REGISTERED PROFESSIONAL SURVEYOR
 REC. NO. 2895
 PHONE (423) 272-6608